

Rolls-Royce Corporation
Indianapolis

Welcome!

March 7th - 2012



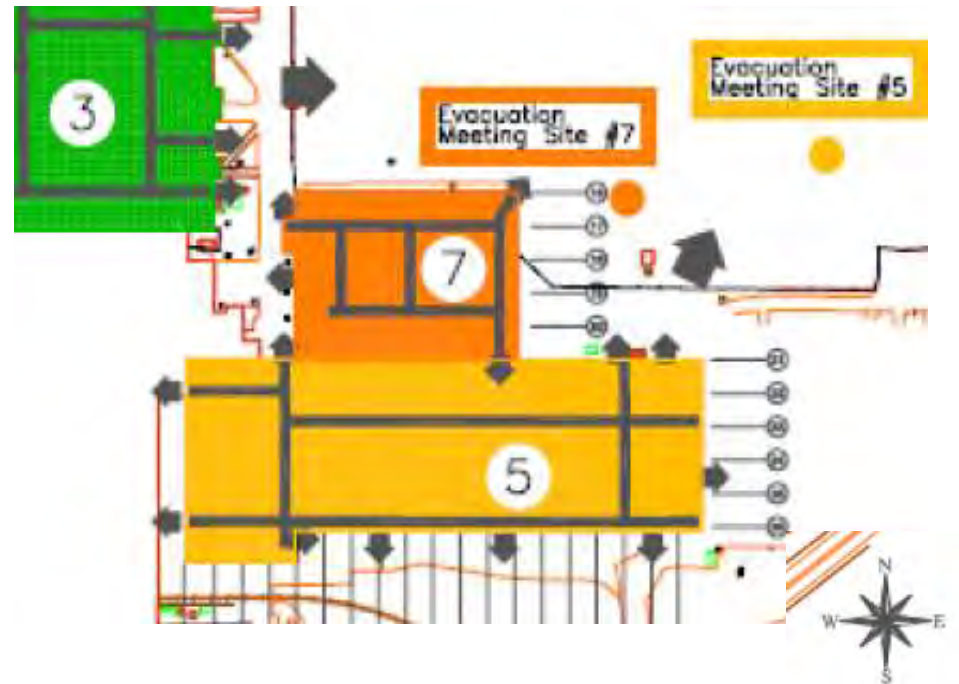
Safety Message: Emergency Readiness

Fire and Evacuation

Emergency Evacuation

In case of an evacuation an announcement will be made over the Public Address system.

Exit the nearest / safest exit and once outside go the “Evacuation Meeting Site #7” as identified by the dark orange rectangle.



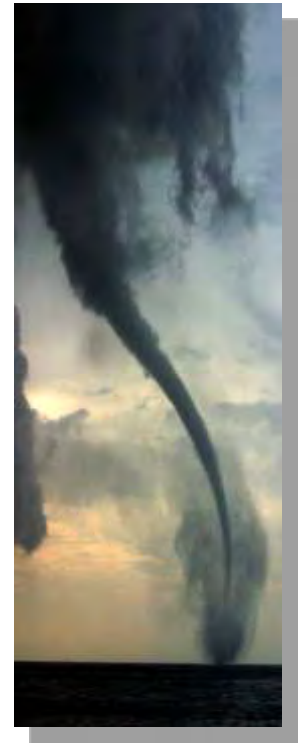
Safety Message: Emergency Readiness

Severe Weather

Security will continuously monitor the weather conditions at the security command center and implement notification and take shelter procedures:

A notification will take place over the Public Address speakers if a severe weather emergency is underway.

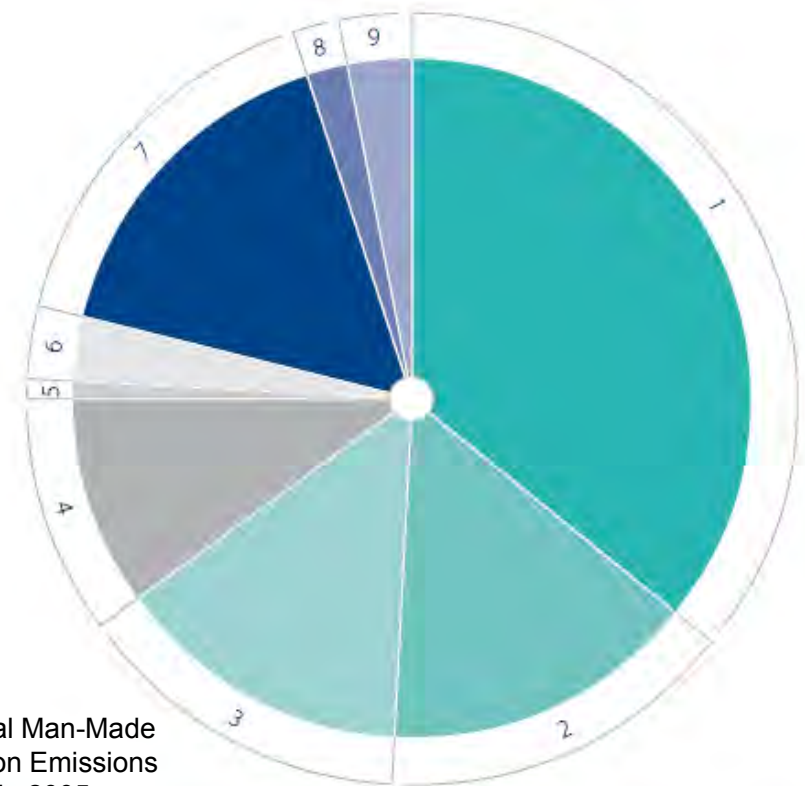
Shelter-in-Place in auditorium.



Who is Rolls-Royce?

Delivering Today, Investing for the Future

- Rolls-Royce is actively engaged in deploying its world-class engineering skills to play its part in developing leading technologies that can be applied to the most complex environmental challenges.
- In 2011 Rolls-Royce invested ~ 1.4 billion dollars in research and development, of which two thirds was focused on improving the environmental performance of our products.



Global Man-Made Carbon Emissions in 2005

KEY			
1 Electricity and heat	36%	5 Fugitive emissions	1%
2 Manufacturing and construction	15%	6 Industrial processes	3%
3 Transport	14%	7 Land use change and forestry	16%
4 Other fuel combustion	10%	8 Aviation	2%
		9 Marine	3%

Source: The World Resources Institute, International Energy Agency and the International Maritime Organisation.

Rolls Royce – Indianapolis : Key Stats -

Two Main Mfg Plants: Plt 5 & 8

Under Roof: 3,400,000 sq feet

Employees: 4,700; 1700 UAW; 1400 Engineers

Second largest manufacturer in Indy

Microcosm of Rolls-Royce

Serves all 4 markets + service business

Contains all CFBU's and 'Capability' Functions

>\$100m capital invested since 2000

Primary Customers: US Navy, Army & Air Force, Cessna, Lockheed-Martin, Embraer, Bell Helicopter, Textron, Robinson



**Design, manufacture, test, and support gas turbine engines
for use on land, sea and air.**

Facilities

- Plant 5
 - 194 Acres
 - 1.7 Million Sq. ft under roof
 - Assembly & Test
 - Component Manufacturing
 - Helicopter CFBU
- Plant 8
 - 211 Acres
 - .76 Million Sq. ft under roof
 - Engineering
 - LibertyWorks
 - Experimental Test
 - DNA, Civil, Energy & Marine CFBU's



Facilities

- Single Crystal Operations
 - 39,245 Sq. ft
 - Casting Manufacturing
- 79th Street
 - 25,600 Sq. ft
 - Pre-production work for the F136 Program – Cast Bond
- Liftfan Focused Factory
 - 37,148 Sq. ft
 - LiftFan Assembly



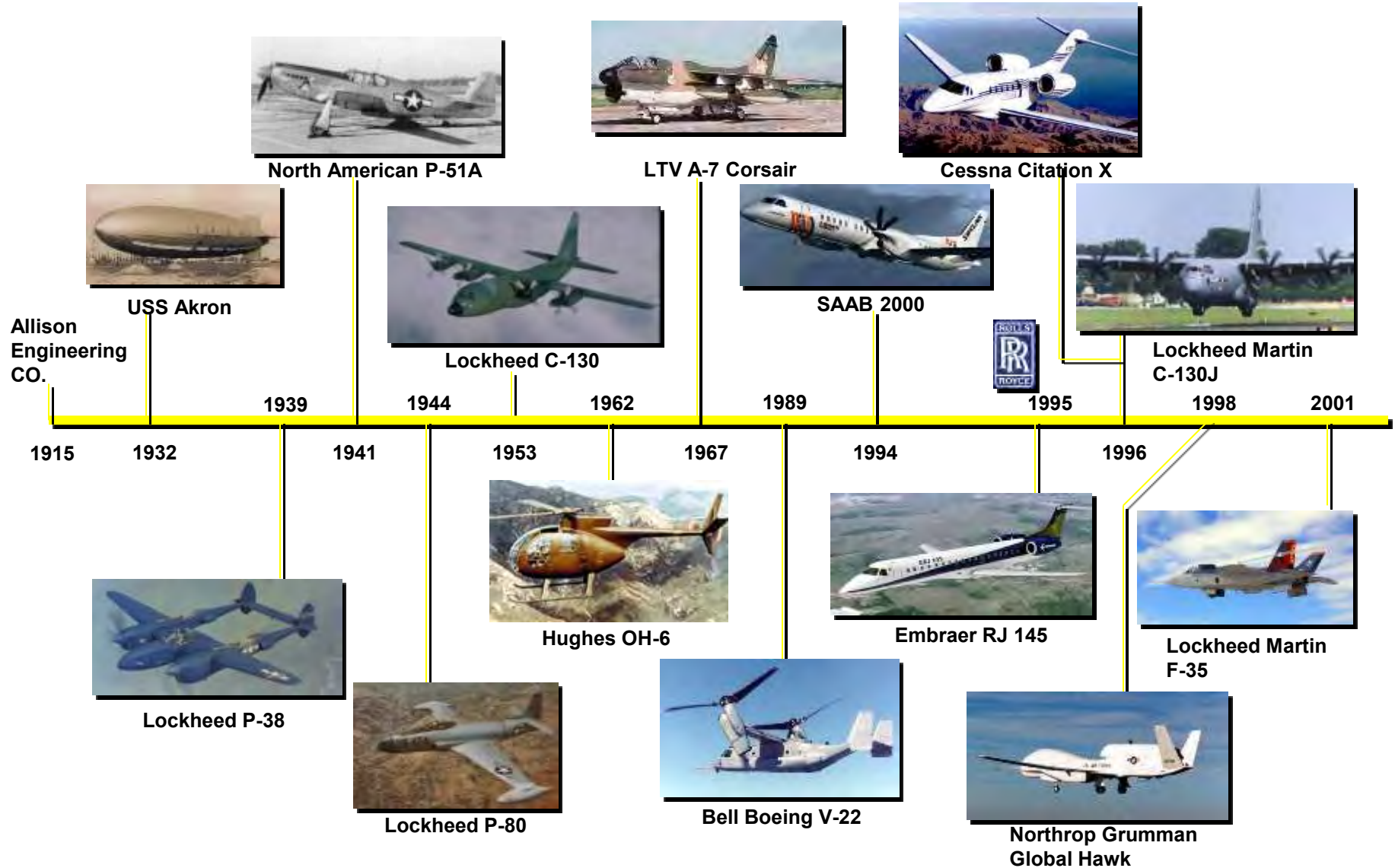
New Facilities

- Meridian Center
 - 320,00 Sq. ft of Office Space
 - Non Manufacturing
 - Fully Occupied by 2013
- Compressor Banded Stators
 - New Facility Opening 2013



U.S. contribution over time..

9



Thank You For Attending Today

- Enjoy Your Time at Rolls-Royce